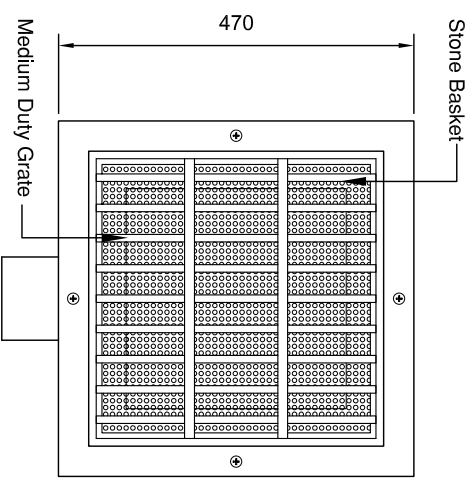
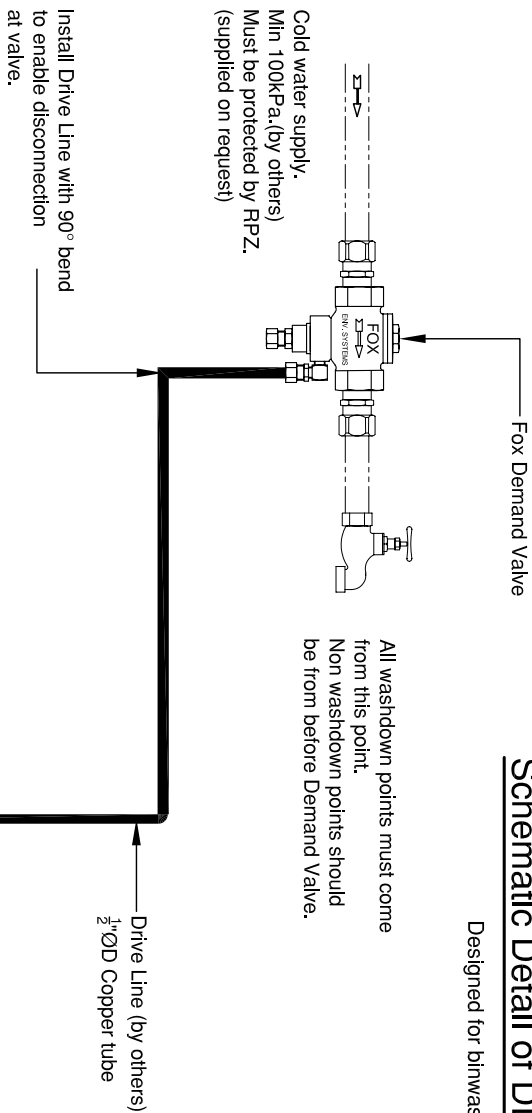


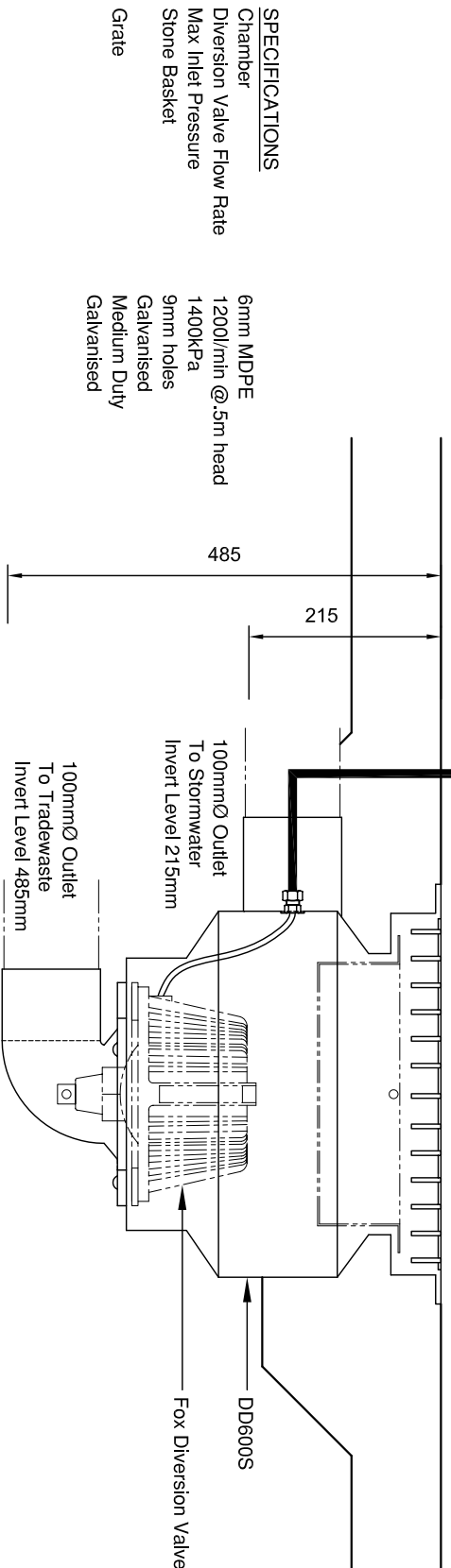
Schematic Detail of DD600S System

Designed for binwash area.

All washdown points must come from this point.
Non washdown points should be from before Demand Valve.



Plan View



SPECIFICATIONS

- Chamber 6mm MDPE
- Diversion Valve Flow Rate 1200l/min @.5m head
- Max Inlet Pressure 1400kPa
- Stone Basket 9mm holes Galvanised
- Grate Medium Duty Galvanised

PROCESS DESCRIPTION

The Fox DD600S is a demand driven diversion unit that is designed for use in an area where a simple washdown process is taking place but the generation of silt is limited. **It is most important that the area be left clean as there is no protection for the environment when a wash operation is not taking place.** All runoff is presented through the grated inlet and a stone basket captures solids and free floating debris. This is removable for disposal of the captured pollutants. During a wash operation all runoff is diverted to Tradewaste. When washdown ceases the valve will close allowing any rain to fill the chamber and leave through the stormwater outlet.



This Drawing and design is the Property of Fox Environmental Systems Pty Ltd. It must not be used for any other purpose than that for which it was issued. This drawing must not be shown or lent to anyone without the written permission of the Fox Environmental Systems Pty Ltd.

Project:	System Specifications
Drawing Title:	DD600S System

Drawn by:	R.O.B.
Date:	20/03/2007
Scale:	NTS
Drawing No:	A4 - SPEC-1001
Revision:	