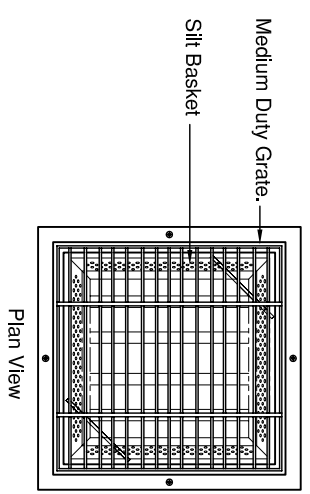
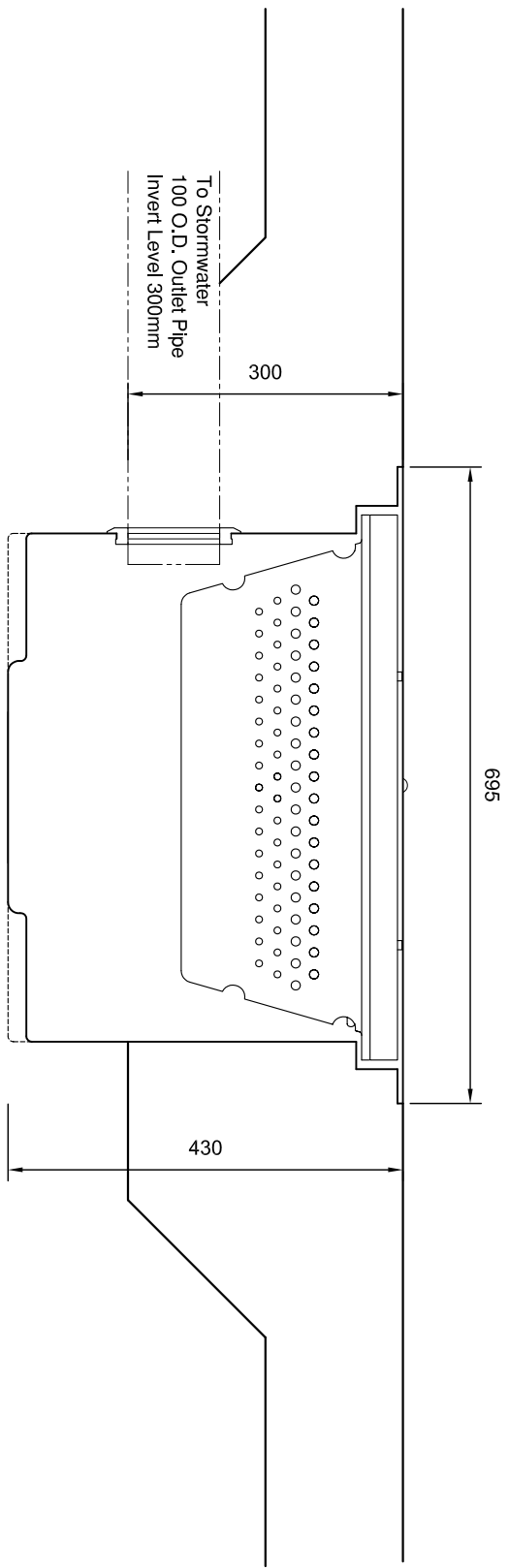


# Schematic Detail of PT600/100 System

## SPECIFICATIONS

Material	6mm MDPE
Chamber Capacity	130 Litres
Outlet Size	100mm
Silt Basket Material	8mm MDPE
Treatable Flow Rate	5 Litres/sec
Grate	Medium Duty
Silt Capacity	Galvanised 50 Litres - Basket 40 Litres - Chamber
Sediment Removal	>0.3mm mesh > 99%



**Available Option**  
 150mm Outlet  
 100mm Outlet in Base  
 Class 'B' Grate  
 Class 'D' Grate  
 Note: Inverts will change. Request details if required.



This Drawing and design is the Property of Fox Environmental Systems Pty Ltd. It must not be used for any other purpose than that for which it was issued. This drawing must not be shown or lent to anyone without the written permission of the Fox Environmental Systems Pty Ltd.

Project: <b>System Specifications</b>	
Drawing Title: <b>PT600/100 Assembly</b>	
Drawn by:	R.O'B.
Date:	12/04/2007
Scale:	NTS
Drawing No.:	A4 - SPEC-1012
Revision:	

## PROCESS DETAILS

A Fox Model PT600 "silt capture unit" is ideal for installation with an indoor wash bay to provide a medium for the capture of silts and debris. The unit has a basket with approximately 50 litres capacity which is easy to remove, ensuring simple, low cost servicing and maintenance. If the intensity of rainfall exceeds the flow capacity of the silt basket or bad housekeeping has allowed basket to become full, water will back-up onto the catchment area. For applications where this is not acceptable a high flow basket should be used.

Where council regulations require the pit to be fully draining the PT600 is supplied with a 100mm Outlet in the base of the chamber. If a high volume of silt is expected in the wash bay, it is recommended that a grated drain is installed prior to the PT600 with baffles to encourage silt settling in the drain where it can be cleaned up by shovel or similar again ensuring maintenance and servicing are carried out with ease. To facilitate a grated drain, a riser can be fitted. These are standard options and we would be pleased to provide more details should you require them for your application.