

Detail of FF600 System

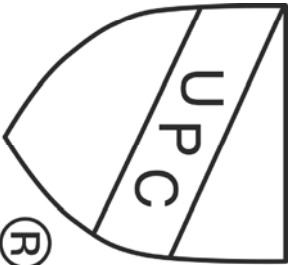
Model: FF600
Manufacturer: Fox Environmental Systems
Max Working Pressure: 170 PSI
Grate Class: Class B Heavy Duty
RPZ: Compliant with ASSE1013

Installing contractor must provide accessible disconnect means to disconnect all the underground conductors supplying the control panel

Must be protected by RPZ compliant with ASSE1013

Model: FF 600
Manufacturer: Fox Environmental Systems
Max Working Pressure: 170 PSI
Grate Class: Class B Heavy Duty
RPZ: Compliant with ASSE1013

Placement of UPC Shield



Fox Environmental Systems Class 2 FF600 Power supply shall be energized by a GFCI protected circuit only
Panel is a NEMA 3R for dry locations only
Fox Environmental Systems to supply proof of UL listing

Control box. Contains PLC and Demand Valve.

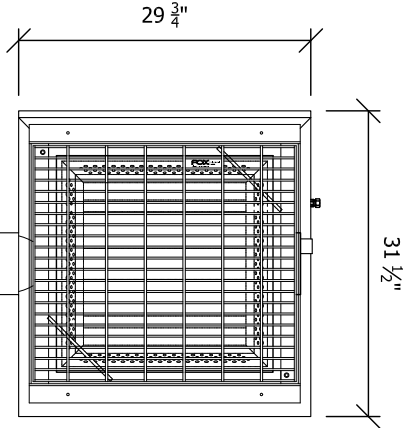
All washdown points must come from this point.

Drive Line (by others)
1/2" ØD Copper tube

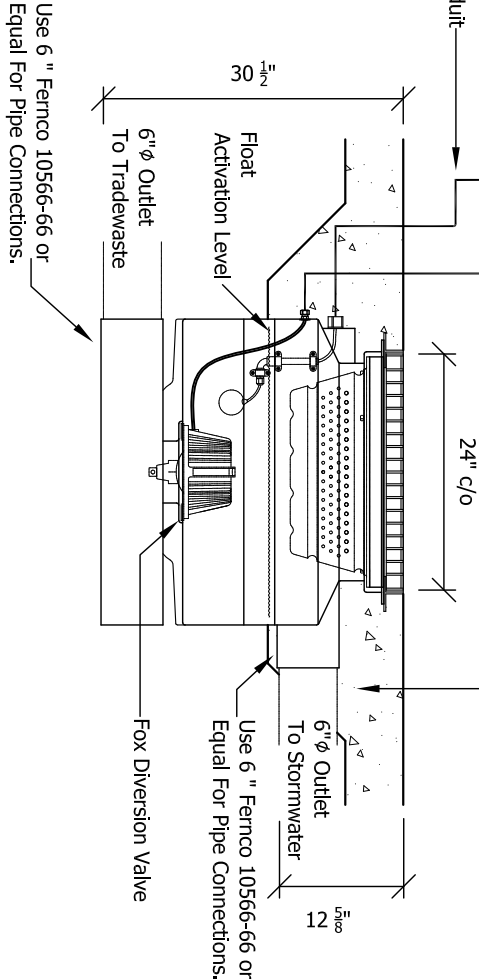
6 core Control Cable
Protect with 32mm Conduit
(by others)

Provide concrete thickening around pit.

Note: Do not distort pit walls when compacting concrete. Do not vibrate concrete near pit. If installed in bitumen a concrete collar must be provided.



Plan View



Project	IAPMO
Drawing Title	FF600 System
Drawn by:	J.F.S
Date:	25/01/2017
Scale:	As Specified
Drawing No:	A4-SPEC-1007