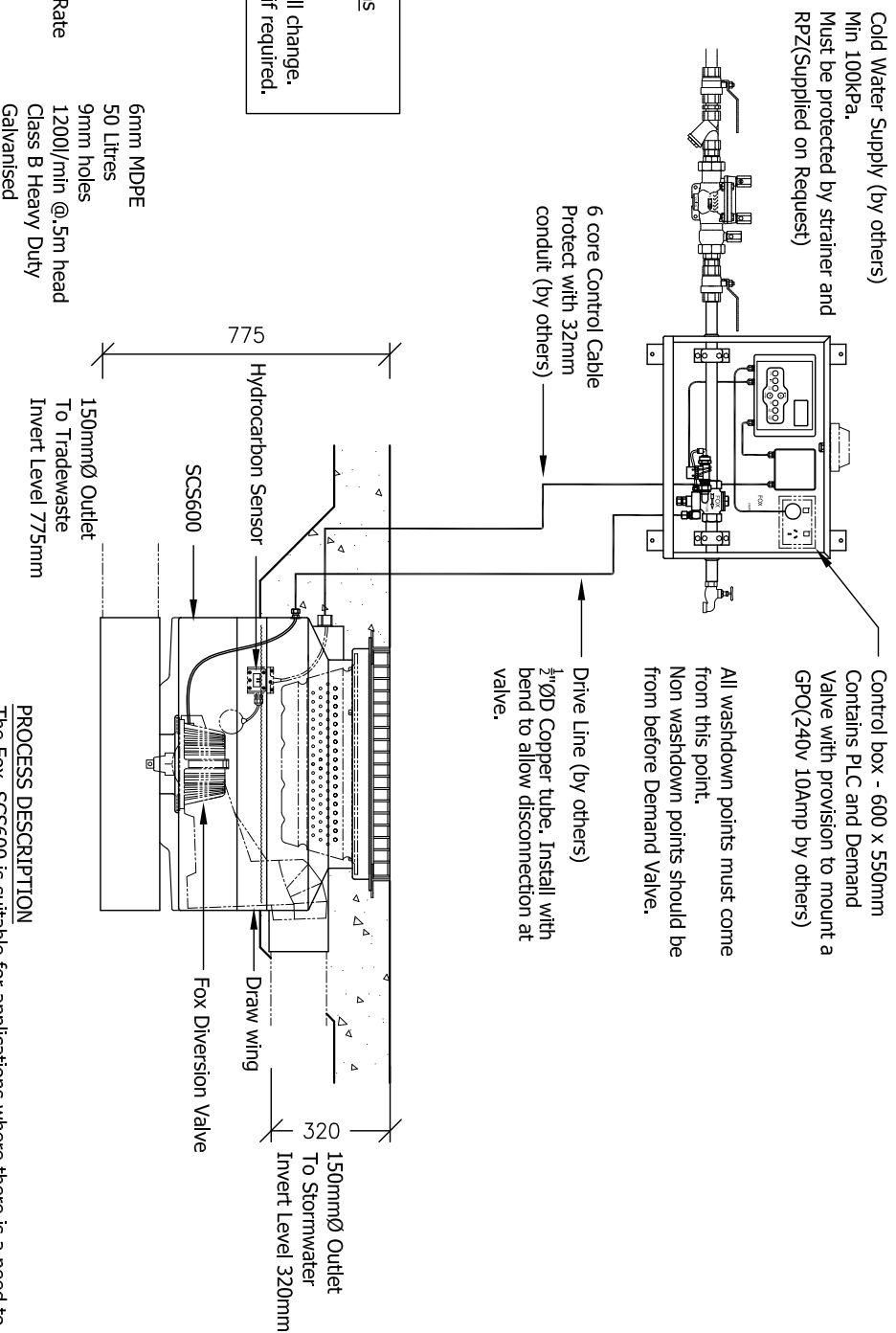


Schematic Detail of SCS600 System with Standard Panel Box

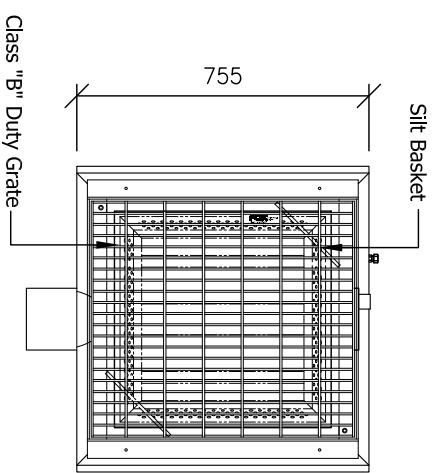


Available Options
Class 'B' Grate
Class 'D' Grate
Note: Inverts will change.
Request details if required.

SPECIFICATIONS

- | | |
|---------------------------|----------------------------------|
| Material | 6mm MDPE |
| Silt Basket Capacity | 50 Litres |
| Diversion Valve Flow Rate | 9mm holes 1200l/min @.5m head |
| Grate | Class B Heavy Duty Galvanised |

Note:
This is a schematic representation only.
Slab size and gradient to engineers details as arranged by customer.
All plumbing and electrical connections to be installed by certified tradesmen in accordance with relative authorities requirements. Tradesmen to be engaged by the purchaser.
System to be approved by relative Local Authorities before Installation.



Plan View

PROCESS DESCRIPTION

The Fox SCS600 is suitable for applications where there is a need to prevent spillage of hydrocarbons or other free floating non-soluble contaminants from entering the stormwater system. A hydrocarbon sensor in the pit can be calibrated to suit site conditions. This sensor detects the presence of significant quantities of hydrocarbons providing an alarm. The pit contents are then diverted to a holding tank. An option is available to totally isolate the site if a spill is detected to ensure that no further runoff can leave the area until the cause of the alarm is addressed. Minor quantities of hydrocarbons are retained in the chamber by a drawing and discharged to the holding tank during a cleansing cycle once each day. Electrical protection is rated at IP65. An Intrinsically Safe supply is not required when the fuel is diesel. If unleaded or other fuels are present an intrinsically safe control panel will be required and is available at an additional cost.

This Drawing and design is the Property of Fox Environmental Systems Pty Ltd. It must not be used for any other purpose than that for which it was issued. This drawing must not be shown or lent to anyone without the written permission of Fox Environmental Systems Pty Ltd.

| | |
|------------------------------|--------------|
| Project | |
| System Specifications | |
| Drawing Title | |
| SCS600 System | |
| Drawn by: | J.F.S |
| Date: | 15/01/2010 |
| Scale: | 1:20 |
| Drawing No: | A4-SPEC-1010 |