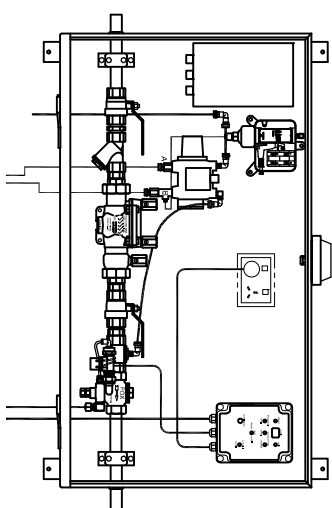
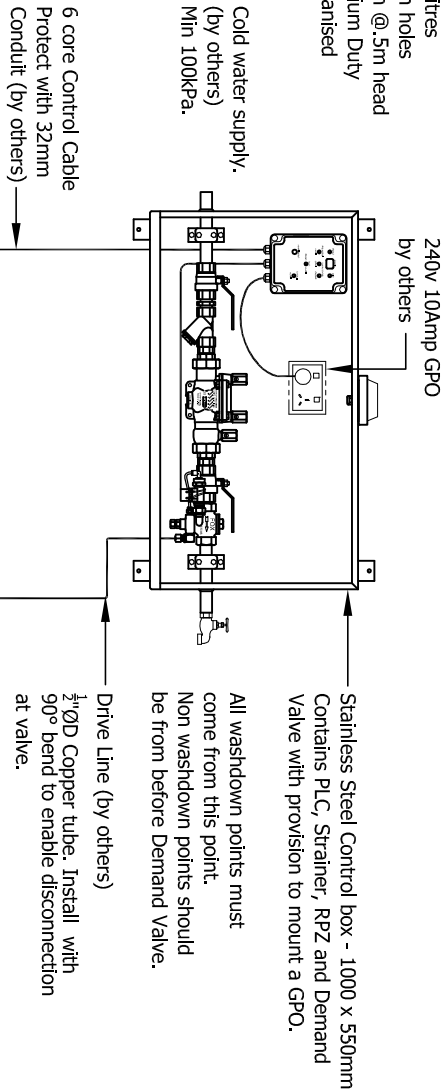


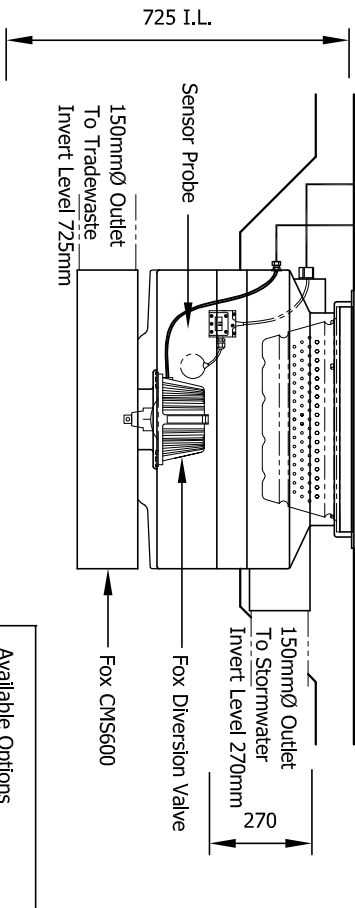
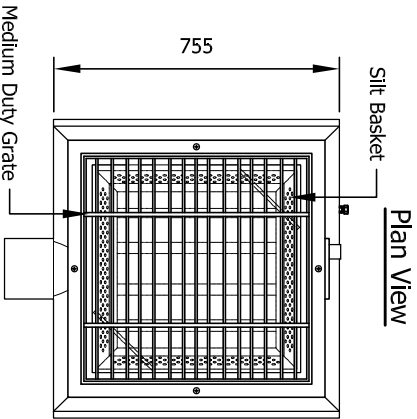
Schematic Detail of CMS System

SPECIFICATIONS

| | |
|---------------------------|------------------------------|
| Material | 6mm MDPE |
| Silt Basket Capacity | 50 Litres |
| Diversion Valve Flow Rate | 9mm holes l/min @ 5m head |
| Grate | Medium Duty Galvanised |



Optional Control box



Available Options
Class 'B' Grate
Class 'D' Grate
Note: Inverts will change.
Request details if required.

PROCESS DESCRIPTION

The Fox CMS600 system will monitor all site runoff for the presence of water soluble contaminants. A sensor in the pit detects the presence of any dissolved pollutants and can be calibrated to match site conditions. Each time the pit fills the quality of the runoff is checked. If the level of pollutants in the runoff is of a concentration that is not suitable to be discharged to stormwater an alarm will be activated and the pit contents will be diverted to a holding tank. After a short delay the system will reset and the Diversion Valve will close. If the next chamber of runoff is contaminated it will also be diverted to the holding tank. This process continues until the water quality is suitable to be discharged to the stormwater system. An option is available to totally isolate the site if a spill is detected to ensure that no further runoff can leave the area until the cause of the alarm is addressed.

Note:

This is a schematic representation only.
Slab size and gradient to engineers details as arranged by customer.
All plumbing and electrical connections to be installed by certified tradesmen in accordance with relative authorities requirements. Tradesmen to be engaged by the purchaser.
System to be approved by relative Local Authorities before installation.



This Drawing and design is the Property of Fox Environmental Systems Pty Ltd. It must not be used for any other purpose than that for which it was issued. This drawing must not be shown or lent to anyone without the written permission of Fox Environmental Systems Pty Ltd.

Project
System Specifications

Drawing Title

CMS600 System

Drawn by: R.O.B.

Date: 20/06/2008

Scale: 1:20

Drawing No: A4-SPEC-1011