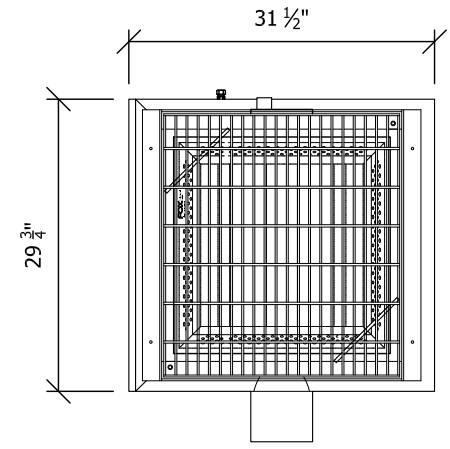
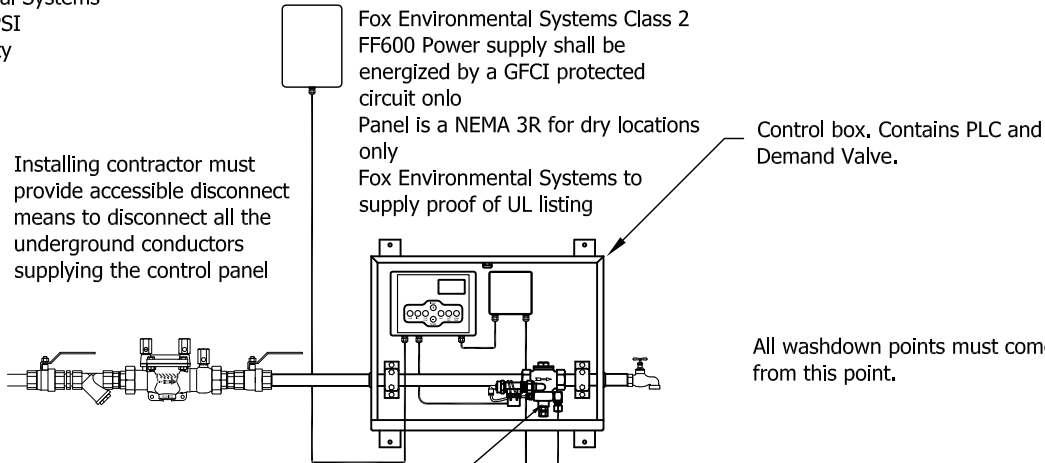


# Detail of FF600 System

**Model:** FF600  
**Manufacture:** Fox Environmental Systems  
**Max Working Pressure:** 170 PSI  
**Grate Class:** Class D Heavy Duty  
**RPZ:** Compliant with ASSE1013


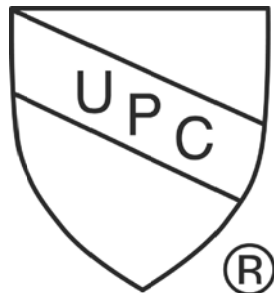
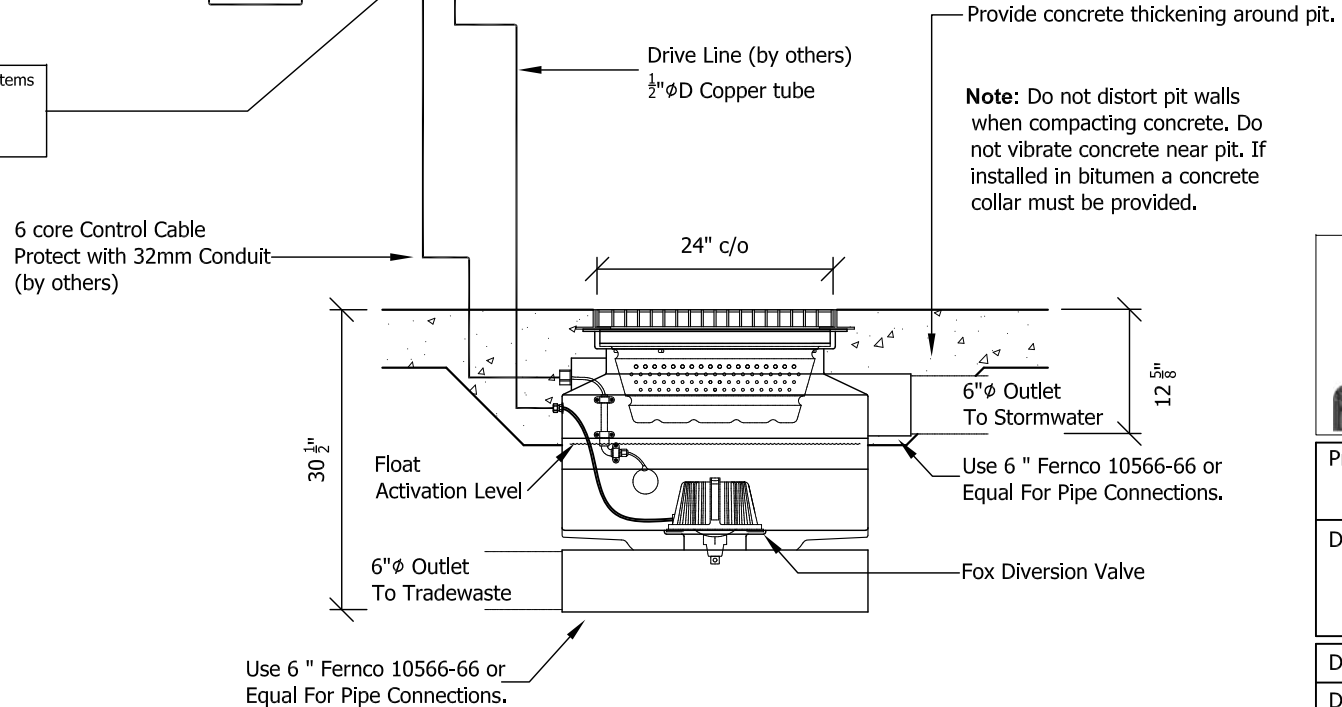


**Plan View**



Placement of UPC Shield

**Model:** FF 600 **Manufacture:** Fox Environmental Systems  
**Max Working Pressure:** 170 PSI  
**Grate Class:** Class D Heavy Duty  
**RPZ:** Compliant with ASSE1013

IAPMO IGC 234 2016  
 File Number 10153



Project	IAPMO
Drawing Title	FF600 System

Drawn by:	J.F.S
Date:	25/01/2017
Scale:	As Specified
Drawing No:	A4-SPEC-1007